

Because working together
will get us there safely

Imagine first

TRCnext

RCCADS

Research Consortium for
Crashworthiness in Automated
Driving Systems

Our Mission

To collaboratively develop a foundation of information that will inform interested parties who seek to develop validation methods for automated driving systems. The mission is to be accomplished by pre-competitive research engaging industry, trade associations, NGOs, government and academia.

The Consortium will focus on research for light trucks and passenger vehicles with automated driving system technology.

The output of the consortium research will consist of data, reports and technical papers.

WHY A CONSORTIUM APPROACH?

- It is a Public Private Partnership able to create a common body of knowledge that will enable the development of robust validation methods for ADS safety
- While the ADS Guidance 2.0 encourages the development of validation methods for ADS and encourages collaboration, the guidance does not set up or provide a mechanism for collaboration and commonality
- Public and private organizations share a common interest of having safe products for consumers

STRENGTHS OF THE APPROACH

- Designed to produce quality research and deliverables quickly and efficiently
- RFPs aimed at specific tasks with 1 year deliverables
- Membership is inclusive to all interested parties
- Public Private Partnership to collaboratively advance the understanding of ADS-related safety
- Members will provide input to the research agenda anonymously to facilitate openness

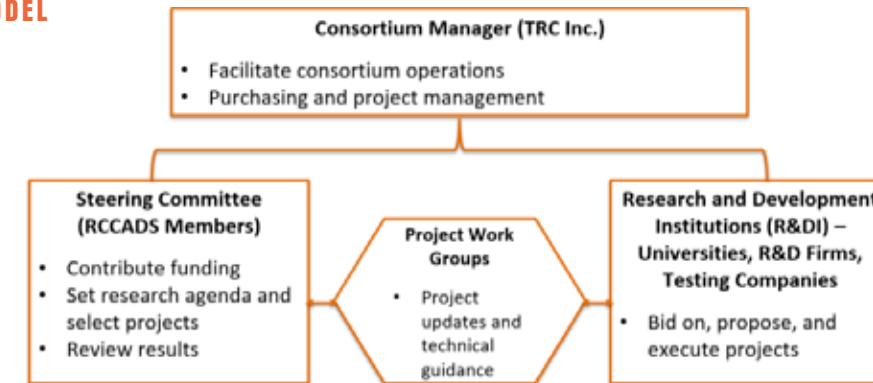
WHY TRC INC.

- TRC Inc. has the appropriate corporate structure:
- 509(a)(3) non-profit
- Accounting and finance policies and procedures
- Procurement department
- Contracts Administration
- Data exchange provisions
- Intellectual property provisions
- Strong collaborative relationship with industry, academia, government and NGOs

OBJECTIVES

- Understand what research is underway globally and then identify gaps in the research that the consortium can fill
- Provide information/data for prediction of future crash modes in which safety validation will be needed
- Create an understanding of the probable/realistic future of non-standard seating configurations and restraints and seating preferences
- Provide biomechanical data that can be used to create guidelines for updating and improving tools and defining risks

CONSORTIUM MODEL



STAKEHOLDER CLASSES

- Steering Committee
 - OEMs
 - Suppliers
 - Tech Companies
 - Government and NGO
- Research and Development Institutions (R&DI)
 - Universities
 - R&D Firms
 - Testing Companies

The consortium will be inclusive of all stakeholder classes and every effort will be made to ensure full inclusiveness within each class.

CONSORTIUM MANAGER

- TRC Inc. acts as an independent center director facilitating the activities of the consortium
- TRC Inc. appoints a Consortium Manager, responsible for the administration of consortium projects and operations
- Not a voting member of the steering committee
- May provide facilities, equipment and/or services to R&DI where requested
- Provides project management analysis and consultation to assist the steering committee

STEERING COMMITTEE

- Steering Committee made up of consortium members:
 - Confirm the Manager candidate
 - Contribute funding
 - Set the research agenda
 - Members will provide input to the research - agenda anonymously to facilitate openness
 - Select project topics for funding
 - Approve RFPs for R&DI proposals
 - Review proposal analysis from TRC Inc.
 - Award project work
 - Appoint project work group membership.
 - Review research results and recommend changes/adjustments prior to acceptance

RESEARCH & DEVELOPMENT INSTITUTIONS (R&DI)

- R&DI propose work in support of RFPs generated by steering committee
- Will be encouraged to bid on all projects for which they have the expertise and desire to conduct
- Will also be encouraged to propose other projects that may be of interest to the consortium
- Execute projects with input from project work groups



PROJECT WORK GROUPS

Project work groups are made up of steering committee members and performing R&DI members:

- Liaise between the consortium and the R&DI
- Steering committee members may or may not be hands on project team members working with R&DI members
- Provide input and technical guidance

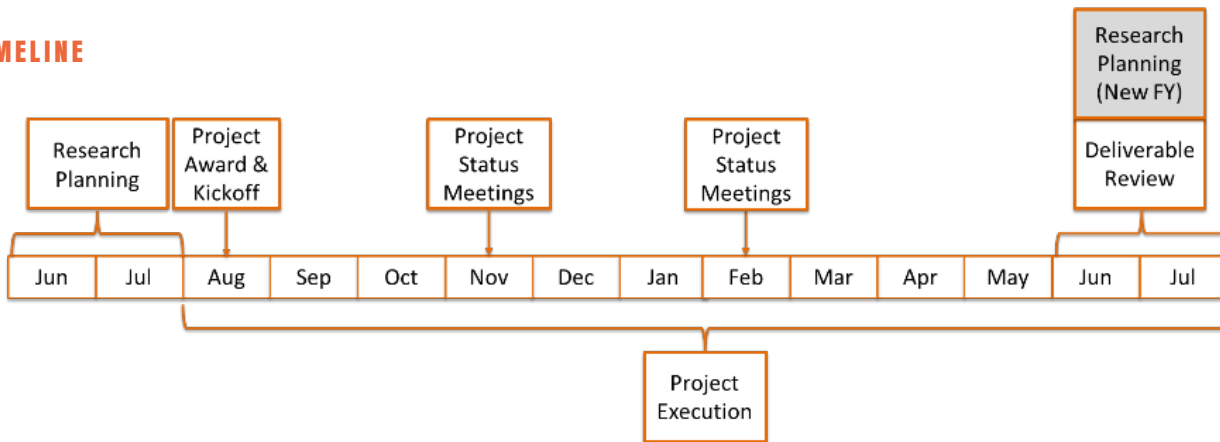
MEMBERS



PROJECT WORK GROUPS

- Project work groups are made up of steering committee members and performing R&DI members:
- Liaise between the consortium and the R&DI
- Steering committee members may or may not be hands on project team members working with R&DI members
- Provide input and technical guidance

TIMELINE



RCCADS

Research Consortium for
 Crashworthiness in Automated
 Driving Systems

CONTACT

Ron Burton, Chief Operating Officer
 Transportation Research Center Inc.
 Burtonr@trcpg.com
 Mobile: 937-935-8563

Michelle Fowler, Consortium Manager
 Transportation Research Center Inc.
 fowlerm@trcpg.com
 Mobile: 937-594-8790